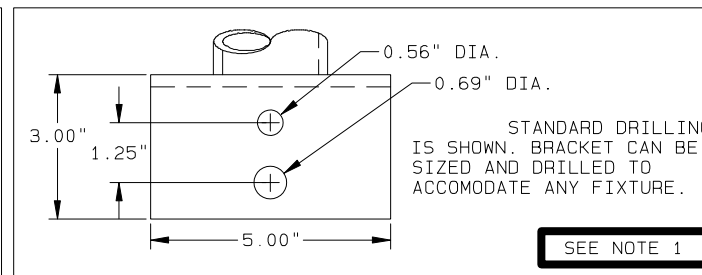
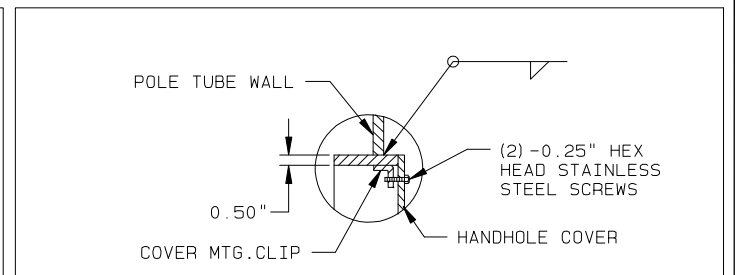


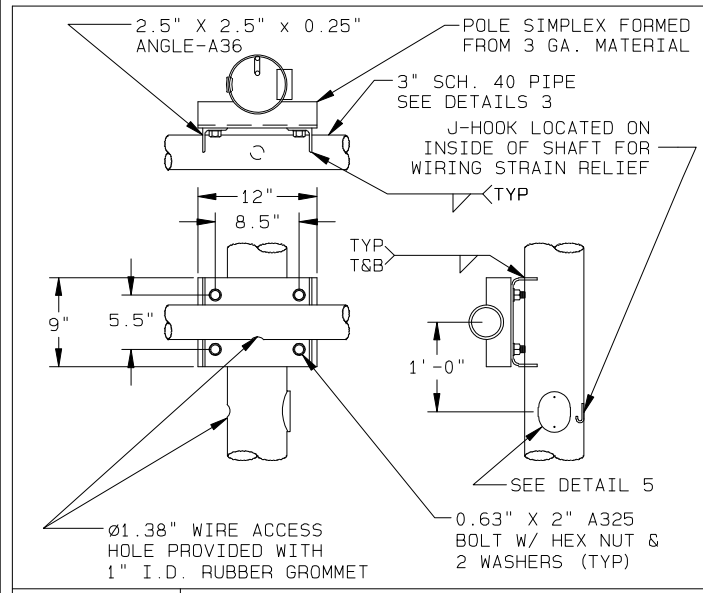
DETAIL 1 POLE CAP



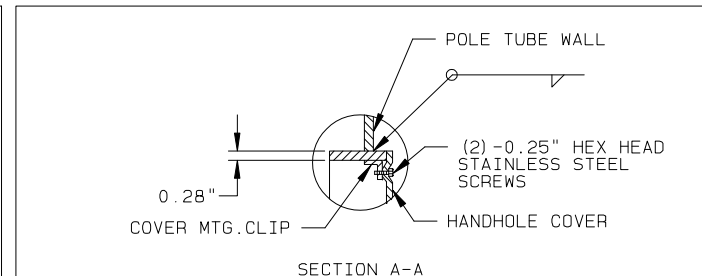
DETAIL 4 LUMINAIRE MOUNTING BRACKET



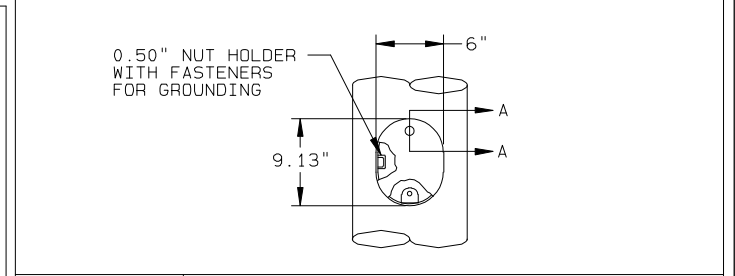
DETAIL 7 HANDHOLE



DETAIL 2 CROSSARM MOUNTING BRACKET



DETAIL 5 HANDHOLE



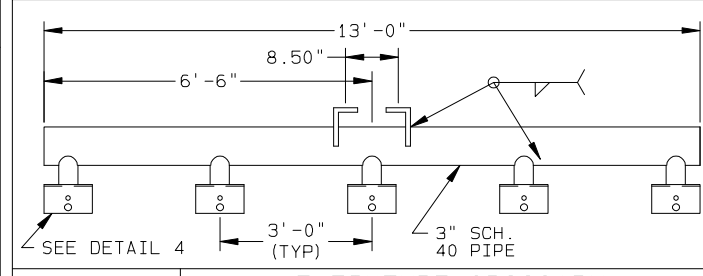
DETAIL 7 HANDHOLE

MATERIAL DATA

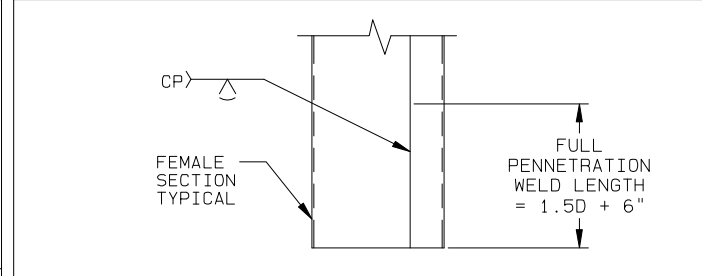
COMPONENT	ASTM DESIGNATION	MIN. YIELD (KSI)
POLE SHAFT	A572/A595 GR. A	55
CROSSARM MTG. BRACKET	A595 GR. A	55
HARDWARE - COATING	HOT DIP ZINC	--

FINISH DATA

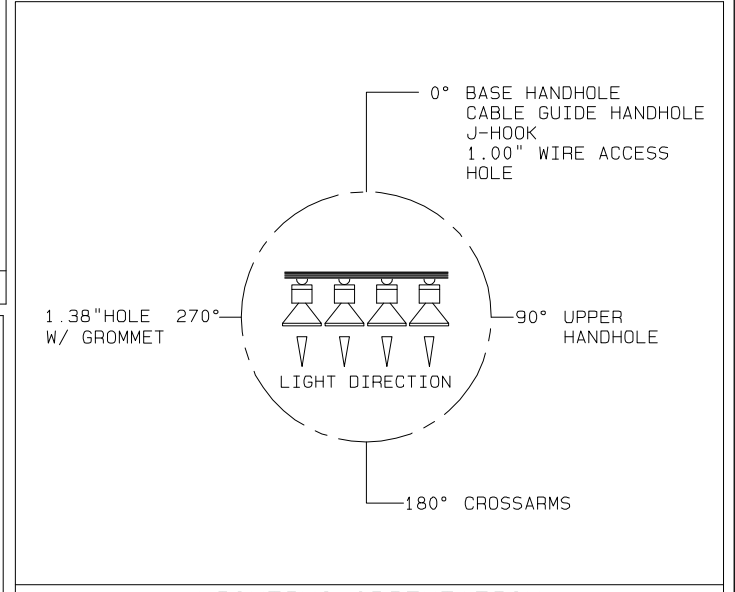
SYSTEM: GALVANIZED (GV)
BASE COAT: HOT-DIP GALVANIZED TO ASTM A123
PRIME COAT: NONE
FINISH COAT: NONE
COLOR: NONE
SPEC: F-1



DETAIL 3 5 FIXTURE CROSSARM



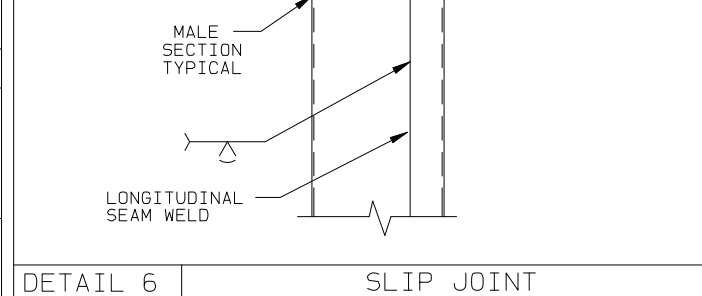
DETAIL 6 SLIP JOINT



LIGHTING ORIENTATION

POLE AND CROSSARM DATA

ITEM	QTY.	DESIGN	NOMINAL MOUNTING HEIGHT (FT)	POLE TUBE				EMBEDMENT DEPTH "D" (FT)	CROSSARM DATA	
				BASE DIA. (IN)	TOP DIA. (IN)	LENGTH (FT)	GAUGE OR THK. (IN)		CROSSARM DESIGN	LUMINAIRE QUANTITY
1	4	EMSP50-04-GV- (3) CR5-COALTAR	50.00	15.30	12.26	21.69	0.219	8.00	(3) CR5	15
				13.00	7.54	39.00	7			



DETAIL 6 SLIP JOINT

ALTHOUGH RARE, VIBRATIONS SEVERE ENOUGH TO CAUSE DAMAGE CAN OCCASIONALLY OCCUR IN STRUCTURES OF ALL TYPES. BECAUSE THEY ARE INFLUENCED BY MANY INTERACTING VARIABLES, VIBRATIONS ARE GENERALLY UNPREDICTABLE. THE USER'S MAINTENANCE PROGRAM SHOULD INCLUDE OBSERVATION FOR EXCESSIVE VIBRATION AND EXAMINATION FOR ANY STRUCTURAL DAMAGE OR BOLT LOOSENING. THE VALMONT WARRANTY SPECIFICALLY EXCLUDES FATIGUE FAILURE OR SIMILAR PHENOMENA RESULTING FROM INDUCED VIBRATION, HARMONIC OSCILLATION OR RESONANCE ASSOCIATED WITH MOVEMENT OF AIR CURRENTS AROUND THE PRODUCT.

VIBRATION DISCLAIMER

NOTE:
VERIFY OR PROVIDE FIXTURE NAME OR DRILL PATTERN PRIOR TO RELEASE FOR PRODUCTION.

DESIGN INFORMATION

CRITERIA: 2009 AASHTO FATIGUE CAT. 1
WIND VELOCITY: 90 MPH
MAX DESIGN EPA: 69.0 SQ.FT.
MAX DESIGN WEIGHT: 1725 LBS.

KBB 04/30/21 AT7 05/04/21		SOLD TO: SHIP TO: P.O. #: SUBMITTAL AGENT: NAFCO INTERNATIONAL		JOB EMSP50-04 LAWRENCEVILLE, NJ TITLE SPORTS LIGHTING STRUCTURES		ORDER NUMBER: 509120-P1 PAGE NUMBER: 1 OF 1 DRAWING NUMBER REV	
REV	DATE	DESCRIPTION					NJ509120P1