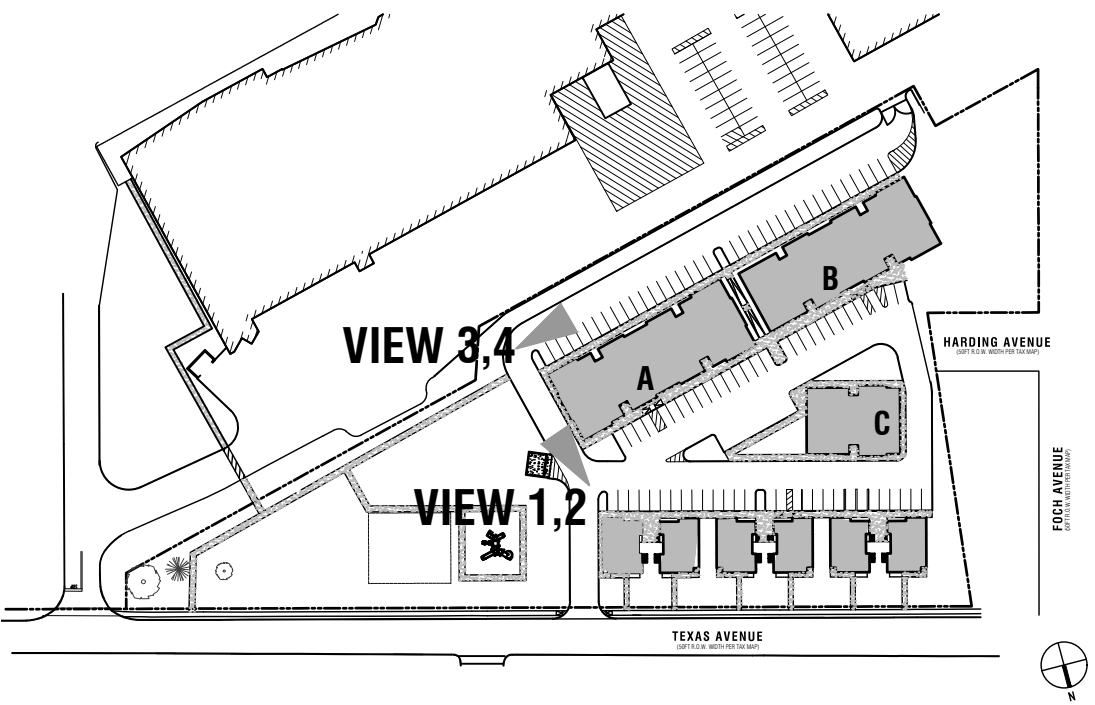


C:\Users\jmg\OneDrive\Documents\Lawrence Shopping Center\A-3.10\A-3.10.dwg



4 KEY MAP
SCALE: N.T.S.



3 EXTERIOR VIEW - LOOKING WEST DOWN NEW DRIVE AISLE/PARKING
BETWEEN DEVELOPMENT AND SHOPPING CENTER (INITIAL PLANTING)
SCALE: N.T.S.



2 EXTERIOR VIEW - LOOKING SOUTH DOWN DRIVE AISLE
TOWARDS REAR OF SHOPPING CENTER (INITIAL PLANTING)
SCALE: N.T.S.



4 EXTERIOR VIEW - LOOKING WEST DOWN NEW DRIVE AISLE/PARKING
BETWEEN DEVELOPMENT AND SHOPPING CENTER (MATURE PLANT GROWTH)
SCALE: N.T.S.



1 EXTERIOR VIEW - LOOKING SOUTH DOWN DRIVE AISLE
TOWARDS REAR OF SHOPPING CENTER (MATURE PLANT GROWTH)
SCALE: N.T.S.



Inglese Architecture
+ Engineering

632 Pompton Avenue
Cedar Grove, NJ 07009
T. 201.438.0081
www.inglese-ae.com
info@inglese-ae.com



JOHN INGLESE NJ A00045900
JOAQUIN BOLZAS NJ GE0299700
ALEXANDER MERLUCCI NJ A01637300
ANTHONY DIAGOSTA III NJ A02002700

THIS DOCUMENT IS THE EXCLUSIVE
PROPERTY OF INGLESE ARCHITECTURE +
ENGINEERING. THE DOCUMENT AND THE
INFORMATION IT CONTAINS MAY NOT BE
REPRODUCED OR USED FOR OTHER THAN
THE SPECIFIC PROJECT FOR WHICH IT WAS
PREPARED WITHOUT THE EXPLICIT CONSENT
OF INGLESE ARCHITECTURE + ENGINEERING.

CONSULTANTS:
CIVIL ENGINEER
DYNAMIC ENGINEERING CONSULTANTS, PC
1904 MAIN STREET
LAKE COMO, NJ 07719

LAWRENCE RESIDENTIAL DEVELOPMENT
NEW 58 UNIT MULTI-FAMILY BUILDING + 6 DUPLEX HOUSES
TOWNSHIP OF LAWRENCE
MERCER COUNTY, NEW JERSEY
BLOCK 2001, LOTS 3, 60-66 & 68, SHEETS 20 & 20.01

OWNER:
LAWRENCE SHOPPING
CENTER ASSOCIATES LLC
112 WEST 34TH STREET, STE 2106
NEW YORK, NY 10120

SUBMISSIONS:
PLANNING BOARD 04.01.2020

REVISIONS:

RENDERING UPDATE	12.04.2020

IAE PROJECT NO: 19066

SHEET TITLE:
EXTERIOR VIEWS

SHEET:
A-3.10