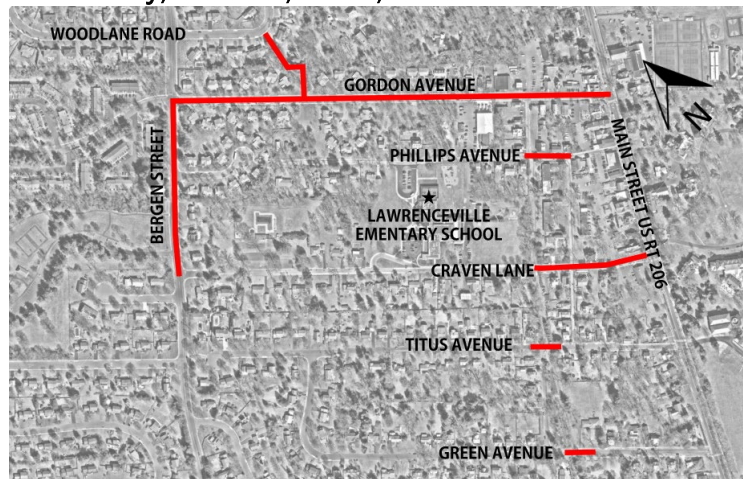


Lawrenceville Elementary School Pedestrian Safety Improvements Township of Lawrence Township SRTS 2022 • Safe Routes to School (SRTS) Project

Preliminary Engineering Phase • Public Information Center

Lawrence Township Municipal Building • 2207 Lawrenceville Road, Lawrence, NJ 08648

Thursday, June 26, 2025, from 6:00 PM – 8:00 PM



The Township of Lawrence will hold a **Public Information Center (PIC)** to provide local residents and businesses with information on the **2022 SRTS Lawrenceville Elementary School Pedestrian Safety Improvements**. You are encouraged to actively participate by providing comments at the meeting, by mail, or by e-mail.

THE MEETING

The purpose of the meeting is to provide an opportunity for input on the project. The Public Information Center will be held in-person at:

**Lawrence Township Municipal Building
2207 Lawrenceville Road
Lawrence Township, NJ 08648
Thursday, June 26, 2025
From 6:00 PM – 8:00 PM**

You will have an opportunity to review exhibits, ask questions and discuss any concerns. Property owners and tenants are invited and encouraged to participate. If you are unable to participate or want to provide comments after the meeting, please visit the municipality's website for information about the project and provide comments by **Thursday, July 10**.

<https://www.lawrencetwp.com/>

PROJECT BACKGROUND

The purpose of this project in the grant application is to improve pedestrian safety along the primary travel corridors to and from the Lawrenceville Elementary School. The project will also serve to benefit all schools in the area as these paths are heavily used by students traveling to other schools. The project's Design and Construction cost is funded by federal funds administered through NJDOT Local Aid Transportation Alternatives (TA) Program and Design Assistance.

PROPOSED PROJECT LIMITS AND IMPROVEMENTS

The project limits consist of the following locations:

1. Bergen Street missing sidewalk connection.
2. Gordon Avenue curb ramps and sidewalk replacement as needed.
3. Concrete walkway connector path from Woodlane Road to Gordon Avenue
4. Phillips Avenue from James Street to George Street
5. Craven Lane from the Johnson Trolley Line to US 206
6. Titus Avenue and Edgehill Avenue intersection
7. Green Avenue near the Johnson Trolley Line

Proposed improvements include:

- Installation of ADA compliant curb ramps, crosswalks, and school zone signage
- Replacement of deteriorated sidewalk and curbs

CULTURAL RESOURCES

Federal and State regulations pertaining to the protection of cultural resources, referred to, respectively, as the Section 106 and the New Jersey Register of Historic Places Act processes, require that the Township of Lawrence and NJDOT take into account the effect of proposed projects upon cultural resources eligible to or listed on the New Jersey Register (NJR) and National Register of Historic Places (NRHP). These processes require coordination between NJDOT and the New Jersey Historic Preservation Office (NJHPO), along with other appropriate consulting and interested parties.

- Lawrence Township Historic District
- King's Highway Historic District

ANTICIPATED PROJECT SCHEDULE:

Design Phase Completed: 2026
Construction: 2026

For further information, please contact:

Brenda Kraemer, PE
Assistant Municipal Engineer • Township of Lawrence
2207 Lawrenceville Road, Lawrence, New Jersey 08648
P: 609-844-7087
E: bkraemer@lawrencetwp.com