

Stony Brook Public Meeting



Please complete the survey using the QR code if you have input on issue areas within your municipality,

including:

Flooding

Erosion

Non-functioning Stormwater Basins

Please submit responses by: **April 13, 2026**

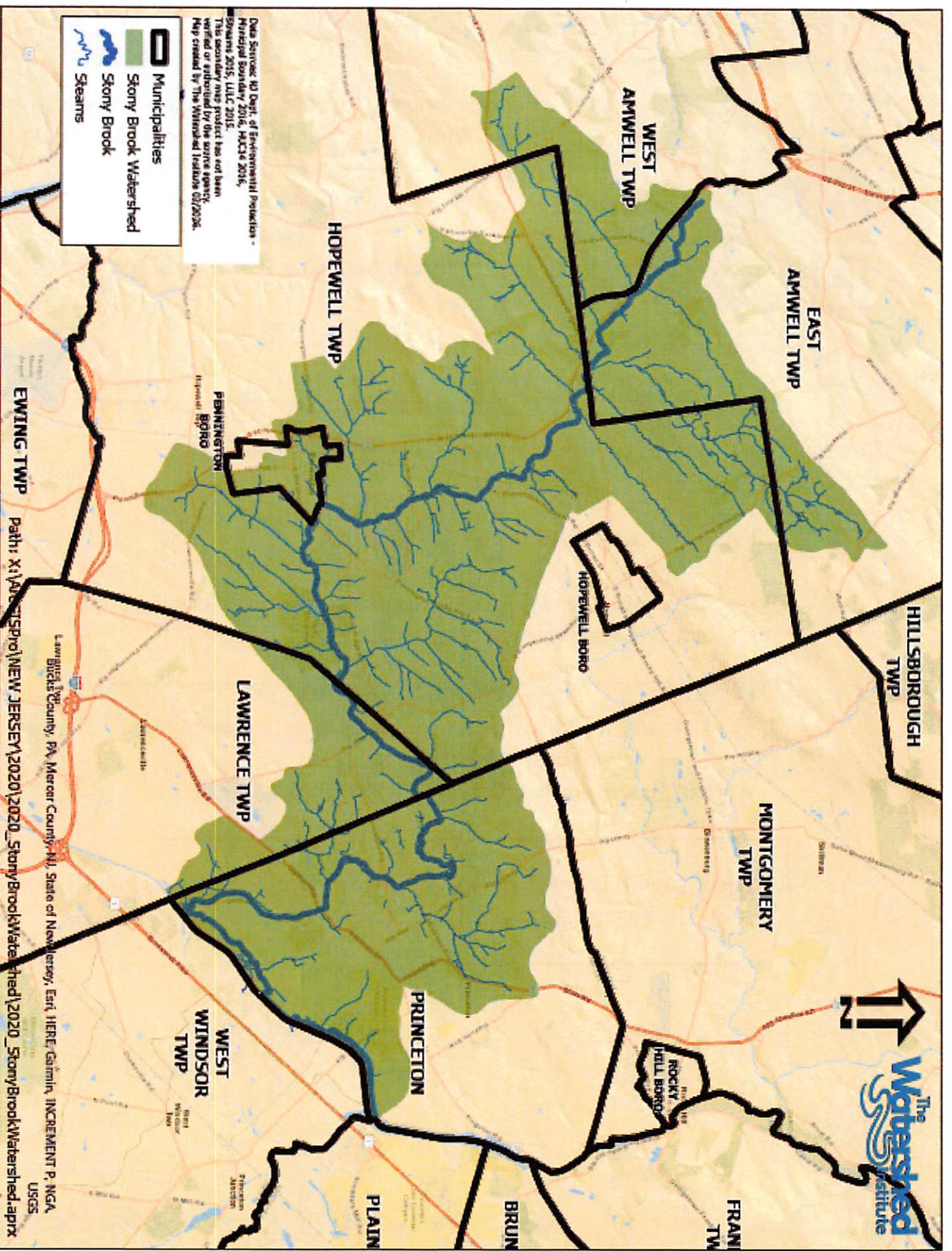
Additional Comments?

Please email **stonybrookwatershed@thewatershed.org** with any additional comments, questions, or concerns.

A recording of the public meeting is available on The Watershed Institute's YouTube Channel:

<https://www.youtube.com/@TheWatershedInstitute>

A copy of your municipality's Watershed Inventory Report may be available on your municipal website.



Municipalities

Stony Brook Watershed

Stony Brook

Streams

Data Source: NJ Dept. of Environmental Protection - Municipal Boundary 2016, MCHM 2016, Sivers 2015, LILC 2015.

This secondary map product has not been verified or authorized by the source agency. Map created by The Watershed Institute 02/2020.

Path: X:\MapServer\NEW JERSEY\2020\2020_StonyBrookWatershed\2020_StonyBrookWatershed.aprx

Lawrence Township, PA, Mercer County, NJ, State of New Jersey, Esri, HERE, Garmin, INCREMENT P, NGA, USGS